

# Turn North



The Monthly Newsletter of the Northland Woodturners

[www.northlandwoodturners-kc.com](http://www.northlandwoodturners-kc.com)

November 2024

## 2024 Officers

David Bartlett, President  
(816) 331-5664  
[dabartle23@yahoo.com](mailto:dabartle23@yahoo.com)  
(vacant) Vice President

Andy Brundage, Secretary  
(816) 305-32238  
[andybrun53@gmail.com](mailto:andybrun53@gmail.com)

Leland Finley, Newsletter Editor  
(816) 830-4702  
[leefin@netscape.net](mailto:leefin@netscape.net)

Chip Siskey, Treasurer  
(816) 858-3080  
[woodchipsbychip@yahoo.com](mailto:woodchipsbychip@yahoo.com)

## Chapter Meetings:

First Thursday of every month, 7-9 pm.  
**Our ADDRESS: 7305 NW Prairie View Road** in Platte Woods. We are across the street from the Platte Woods Methodist Church who has allowed us to park there when our regular parking is taken up (only about 7 cars/trucks can park in back).

## Coming Attractions

Newsletters on the Chapter Website:  
<http://northlandwoodturners-kc.com>

Event Information:

**Ornament Contest**  
**Turning Challenge**

**Remember—2024 dues are \$10 for the year.**

**Due beginning**  
**January 2 2025**

**Next Meeting:**  
**December 5. 2024**



**Well, Here it is December already!** You know what that means...

Ornament contest, Turning Challenge, Food and drinks (non-alcoholic) and LOTS of fun and visiting.

**Sooo...** Let's get ready for some real fun! Oh, yes... A Drawing from the "canned" tickets that didn't win all year. Someone will take home a really neat prize again this year.

**First,** let's look at November's **SHOW and TELL**



**Chip Siskey** brought a "bark-on" bowl made from an *unknown wood*.

Finished with lacquer and showing his script ID on the bottom it was a nice turning with lots of interesting grain. Great job Chip!



**Steve Dougherty** brought his version of a Pepper Mill made from spalted **Sycamore**.

It has a Poly wipe-on finish and the “ball” top is the turning mechanism that turns the grinder allowing pepper to fall to the “mill” on the bottom. Needless to say, it is hollow to allow peppercorns to be added into the hollowed part. The little metal top piece unscrews to allow the “ball” to be removed, thus exposing the “storage” for peppercorns inside.

Good job Steve and nice finish. BTW, Steve said it does work!



**Past President Harlan Henke** showed a “non-melting” Snowman Ornament made from **Ash** wood. It would appear that a lacquer-type finish was used to keep the shine. Also, a fishhook-type hanger appears on top to allow the snowman to “hang out” on the tree.

Not to be left blank, a ribbon tied around between the “head” and body completes the turned piece.

Great work and CUTE!!



**Rick Turner** brought a small bowl made from **Myrtlewood**. The pen in the far-left picture is there for size comparison. Rick said he had not finished it since he was trying to figure out how to easily remove the little “pud” where it was on the headstock of his lathe. Several solutions were offered by those in attendance so Rick could finish his piece. The grain pattern is really nice and the fiddleback

design is prominent on both the inside and outside of the turning. Nice job, Rick. We’re looking forward to more from this design from you down the road.



**Darwin St. Myers** brought two **Walnut** bowls one of which he said was turned from scrap. Whatever, it is a really nice turning and has a Wipe-on Poly finish.

This bowl is about 8” in diameter with a flat inside bottom.

On the next page are pictures of the other bowl that Darwin turned.





This was **Darwin St. Myers'** other piece and also made from **Walnut**. See at left as Darwin holds up both turnings.

Good job Darwin.

## Program Highlights



The featured turner for the November meeting was Mel Bryan. Mel displayed several examples of his idea for a Christmas Ornament (*next page*). This fit right in for the upcoming December meeting Show and Tell since a contest and display of everyone's work (*well...everyone who wants to participate*) in turning a Christmas ornament. Prizes will be awarded at the December 5 meeting for the best ornament as well as most unique design.

There will also be a turning challenge for those who want to show off their turning skills. "**Timing**" will be a key for the winner of that contest too.

Back to Mel's presentation. Using a 2"x2"x6" block of wood with 1/4" pieces glued on all four sides about 1/3 of the way down from the headstock location, Mel proceeded to turn, hollow and re-assemble parts and finish turn a Christmas ornament. Pictures and descriptions follow on the next few pages.



Shown here are some of Mel's creations using a variety of base and add-ons, all of which are hollow inside. Maple, Cherry, Walnut, Oak, Ash and even some exotic woods such as is shown below can be used to make the ornaments.



Mel's base piece on the right was made from Yellowheart which is a somewhat softer wood than the Cherry or Oak which would be glued on the outside. Mel stated that a firm, but softer wood is a little harder to turn once the hollowing begins but provides a better job when completed and is a little lighter in weight on the tree.

For his demonstration Mel used a light-colored wood for the base with 4 pieces of **Walnut** glued on the outside.



After initial turning, Mel retightened the turning in the chuck. You can see from the picture at left where the shape is beginning to appear.

At right Mel is laying out where the "ball" of the turning will be. The part toward the tailstock will become the finial on the finished turning. At one point it gets cut off and the ball part gets hollowed out.



Using a skew chisel, Mel proceeded to mark the top and bottom of the ball part and cut into the turning.



Note also the taper on the tailstock piece. This taper would be duplicated on the ball later so it could be reattached for the small finial.





Once the rough turning was completed, the tailstock part was removed with a parting tool. The end of the ball part was smoothed and using a small bowl gouge Mel proceeded to hollow the ball. Shown directly above is

the marking to know how deep to hollow using a piece of tape as a guide.

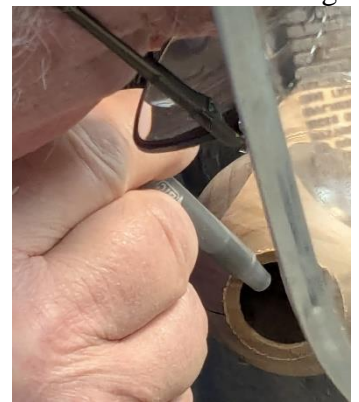
Working the bowl gouge into the center of the turning piece Mel began an indent into the turning which would allow him to hollow the piece.

Note the angle of the tool below as Mel continued to hollow the turning. Swinging the tool towards him allowed the tool to cut the wood and produce the hollowed-out ball, thus reducing the weight of the finished piece.



Using a “custom” blowpipe (*actually the barrel of a used Bic™ ballpoint pen*) Mel removed the shavings inside the hollowed turning.

Once the correct depth of the hollowed part was reached, the next step was to provide a way to reattach the tail-



stock part removed earlier. Note the circled rim at left. This would be used to provide a taper on which glue (CCA) would be put to reattach the cut off piece.

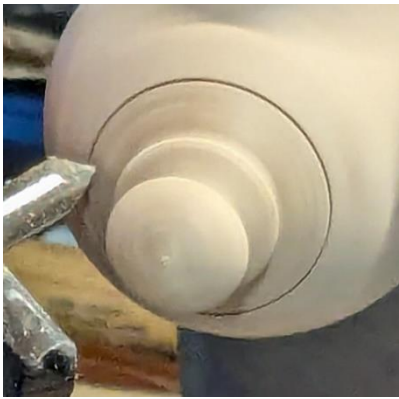


Once the taper was complete, Mel used Cyanoacrylate glue to reattach the tailstock piece previously removed. There was a fine line where the two pieces were reattached but this was taken care of with some “decorative” cuts.





From left to right, the tailstock piece is reattached, the forming of the lower finial begins and the shape appears at right. Note there IS a line where the attachment was done. Not to worry, however, it will go away later.



The joint line that indicated where the tailstock piece was rejoined is now the basis for some decorative cuts using the bowl gouge to score small lines and widen SLIGHTLY the original joint line. Once this is completed with some LIGHT sanding, the ball is parted off. Note there appears to be a hole in the remaining piece in the headstock chuck. This would be used to attach a top finial which would then get the tree hanging wire.

This was a really fast demo taking only about 90 minutes to complete from a rough piece to a “finished” turning. Still to do, of course, is the top finial, finishing and packing for shipment, wrapping or hanging on the tree.

Nice demo Mel. All are looking forward to your next demo turning. Merry Christmas and Happy New Year.



Thanks to everyone who has helped with our plug orders AND baton work in the past. We will be asking for help getting other projects to raise funds. All ideas are welcome along with samples.

The CLUB NEWSLETTER tab of the club website is at  
<http://www.northlandwoodturners-kc.com/>

**Please patronize our advertisers.**



**WOODCRAFT**  
*Helping You Make Wood Work*

8645 Bluejacket Rd  
Lenexa, KS 66214  
(913) 599-2800  
M-F 9-9 · Sat 9-6 · Sun 9-5  
Are you signed up for our email specials??



**METRO**  
HARDWOODS, INC.

Jeff Edemann, Store Manager  
4243 S Noland Rd Independence, MO 64055  
816-373-1710




**Schutte**  
LUMBER CO.  
*A Landmark Company Since 1880*

816-892-3398  
800-456-2148  
Fax 816-753-0250

3001 Southwest Boulevard  
Kansas City, MO 64108-3616  
www.SchutteLumber.com

Sales@SchutteLumber.Com


816-892-3398 Phone 816-753-0250 Fax



**Woodchips**  
by Chip

Custom Woodturning and  
Woodturning Instruction

Robert "Chip" Siskey  
Woodchipsbychip@yahoo.com  
(816) 858-3080



**CRAFT SUPPLIES USA**  
— THE WOODTURNERS CATALOG —

1287 E. 1120 S.  
Provo, UT 84606  
800-551-8876  
M-F, 7 am-6pm, MST  
Check out the Club Specials every month.  
Enter "NorthlandWoodturners" when asked for club name.

**REMINDER:**

The annual dues for 2025 **will be due January 2, 2025—Still only \$10.00.**  
*Advanced payments are accepted.*

Checks can be made payable to **Northland Woodturners.** (or cash is good too!!)