

Turn North



The Monthly Newsletter of the Northland Woodturners

www.northlandwoodturners-kc.com

November 2024

2024 Officers

David Bartlett, President
(816) 331-5664
dabartle23@yahoo.com
(vacant) Vice President

Andy Brundage, Secretary
(816) 305-32238
andybrun53@gmail.com

Leland Finley, Newsletter Editor
(816) 830-4702
leefin@netscape.net

Chip Siskey, Treasurer
(816) 858-3080
woodchipsbychip@yahoo.com

Chapter Meetings:

First Thursday of every month, 7-9 pm.

Our ADDRESS: 7305 NW Prairie View Road in Platte Woods. We are across the street from the Platte Woods Methodist Church who has allowed us to park there when our regular parking is taken up (only about 7 cars/trucks can park in back.

Coming Attractions

Newsletters on the Chapter Website:
<http://northlandwoodturners-kc.com>

Event Information:

NEEDED: Fund raising Ideas.

Remember—2024 dues are \$10 for the year.

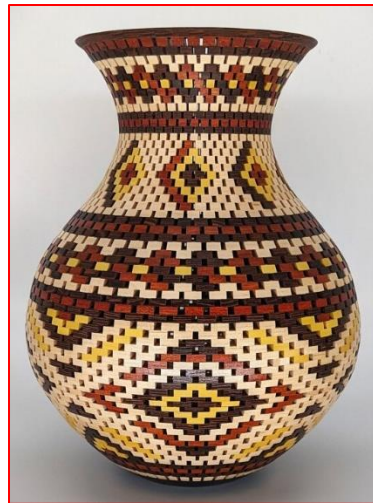
Due beginning January 4 2024

**Next Meeting:
November 7, 2024**



Only two more months 'till 2025 but do we have a great program series lined up for you in these two months. December brings the traditional Turning Challenge with prizes for first, second and third place. The big prize from the tickets you deposited each month in the little can will be drawn and lots of holiday goodies will also be there for the eating. Make sure to attend, there's lots of space, really!! Just don't miss out. November will see some interesting stuff also. Maybe your special turning will be featured in the Show and Tell section of the newsletter for December too. There MIGHT JUST BE a contest for the best 2024 Show and Tell entry from January through November.

December also features a Christmas ornament contest along with the turning challenge so get busy designing your version and surprise everyone with your entry.



Open Segmented SW Design
48 seg per row - 11" h - 8.5" at its widest
Bloodwood - Maple - Wenge - Yellowheart

Welcome to the website of the Segmented Woodturners, a chapter of the American Association of Woodturners that was formed in 2009. Our on-line chapter is dedicated to segmenting education and the sharing of information between its 500 members.

Our mission is to provide a 1st class website, a forum for asking questions and sharing information, and a gallery of members artwork with an archive of 1000's of pieces and growing to inspire you.

Taken from the website <https://segmentedwoodturners.org/>



Thanks to Andy Brundage for the Show and Tell pictures in this month's newsletter.







Chip Siskey brought the stands used for his canes he makes. One allows the cane to simply be inserted into the wood base and The other one is actually a “foot” for the cane to give some stabilization while in use. Both cane tops are formed by steam bending like what was shown The September meeting.

in

PROGRAM HIGHLIGHTS

Thanks to Carl Sievering for pictures of the Program Highlights this month



Club president David Bartlett showed the process of making a Laminated nut cracker using laminated 2-color woods. The first job was to bore a hole which would be used to insert the nut for cracking. Then David turned a cylinder from a 3" square block approximately 6" long. Once turned cylindrically, a hole had to be bored in the center and threaded using a wood tap. Then a piece of threaded wood was made along with the handle which was cut from one end of the cylinder. The finished piece is shown at the right.



Come see what's happening at the November meet on November 7.

Remember, YOU could be the feature in the program highlights, just let David, Chip or Andy know so they can schedule you into the action.

Thanks to everyone who has helped with our plug orders in the past. We will be asking for help getting other projects to raise funds. All ideas are welcome along with samples.

The CLUB NEWSLETTER tab of the club website is at
<http://www.northlandwoodturners-kc.com/>

Please patronize our advertisers.



WOODCRAFT
Helping You Make Wood Work

8645 Bluejacket Rd
Lenexa, KS 66214
(913) 599-2800
M-F 9-9 · Sat 9-6 · Sun 9-5
Are you signed up for our email specials??



METRO
HARDWOODS, INC.

Jeff Edemann, Store Manager
4243 S Noland Rd Independence, MO 64055
816-373-1710



Schutte
LUMBER CO.
A Landmark Company Since 1880

816-892-3398
800-456-2148
Fax 816-753-0250

3001 Southwest Boulevard
Kansas City, MO 64108-3616
www.SchutteLumber.com

Sales@SchutteLumber.Com

816-892-3398 Phone 816-753-0250 Fax



Woodchips
by Chip

Custom Woodturning and
Woodturning Instruction

Robert "Chip" Siskey
Woodchipsbychip@yahoo.com
(816) 858-3080

CRAFT SUPPLIES USA
— THE WOODTURNERS CATALOG —

1287 E. 1120 S.
Provo, UT 84606
800-551-8876
M-F, 7 am-6pm, MST
Check out the Club Specials every month.
Enter "NorthlandWoodturners" when asked for club name.

REMINDER:

The annual dues for 2024 **are still only**
\$10.00. Advanced payments are accepted.

Checks can be made payable to **Northland**
Woodturners.