

Turn North



The Monthly Newsletter of the Northland Woodturners

www.northlandwoodturners-kc.com

June 2023

2023 Officers

David Bartlett, President
(816) 331-5664
dabartle23@yahoo.com

Danny Smith, Vice President
(816) 720-3781
ishear4@gmail.com

Andy Brundage, Secretary
(816) 305-32238
andybrun53@gmail.com

Leland Finley, Newsletter Editor
(816) 830-4702
leefin@netscape.net

Chip Siskey, Treasurer
(816) 858-3080
woodchipsbychip@yahoo.com

Chapter Meetings:

First Thursday of every month, 7-9 pm.
Our ADDRESS: We're at **7305 NW Prairie View Rd.**, just across from the United Methodist Church. Come early or park in the Church parking lot on the south side of the building. 7305 has VERY limited parking in back. **GO UP TO BARRY RD and come back or take 64th St NORTH exit left under bridge to Prairie View Road by Hy-Vee.**

Coming Attractions

Newsletters on the Chapter Website:
<http://northlandwoodturners-kc.com>

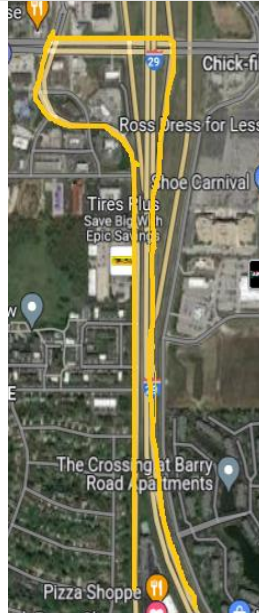
Event Information:

NEEDED: Fund raising Ideas.

Remember—2023 dues are \$10 for the year.

Due beginning January 5 2023

**Next Meeting:
June 1, 2023**

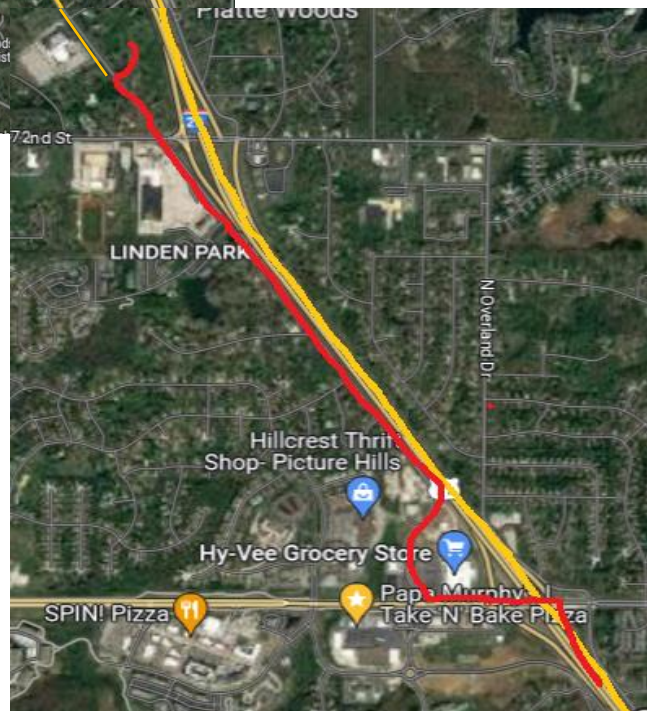
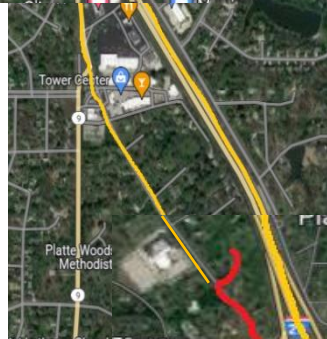


Due to construction on I-29 at 72nd Street, different routes are required.

Either come north and take 64th street exit left under the bridge to Prairie View Road at Hy-Vee and turn right to cross 72nd north of there, OR

Go north on I-29 past the construction watching for lane changes at 72nd Street and take Barry Road exit. Go left to NW Prairie View Road. Turn left on Prairie View Road and come down to 7305 across from the United Methodist Church.

This process will continue through about November 2023 due to construction of the new bridge over 72nd Street. Map at left shows the two routes: Red for 64th St. and Yellow for Barry Road.



Show & Tell



Mel Bryan brought a **Cherry Bowl** that was about 2" deep and 7" in diameter.

He also brought a **Sycamore/Hackberry** box and a **Hard Maple** Lighthouse box (*camera fail on picture below*)



Mikeal Jones brought two heart-shaped bowls, one made of Oak and one made of Sweet Gum.

The Oak bowl is stained with a purple stain and the Sweet Gum is finished with a gloss finish.

Mikeal also brought an off-center turned bowl with multiple dyes applied.





Dwight Herrick brought a couple of examples of his Duck Calls. The light-colored call is made of **Cedar** and the dark one is **Walnut**. His business is **Salem Ridge Woodworks™** and that is the brand applied to his calls. At far right is a more detailed image of his hand carving on the Walnut call. Dwight is also an accomplished caller as demonstrated for the club during his Show and Tell turn.

Kent Townsend brought some more examples of his hand carving with some utensils. Two different kinds of wood were used for the two sets. Length of the lower spoon is about 9" with the matching fork and spoon being about 6-1/2" long.

Both sets are very smooth and well-finished with a food-safe finish.

Good Job Kent!!





Danny Smith brought in the bowl made at the April meeting and when completed, had a hole in the bottom. Danny filled it with Epoxy which was supposed to be a different color. Still would “hold water” after the epoxy was applied. The bowl was a natural edge Oak Burl to begin with.



Program Highlights



Special Guest Anthony Harris of Overland Park, KS, a 54 y.o. woodturner was the feature program for the May meeting.

Anthony specializes in turning nuts of all types. Shown in front of Anthony at left are some of his finished products along with the raw nuts from which the turnings came.



compared to Anthony’s finger sizes.

One of his specialties is to turn an Acorn shape with two different materials as shown above. Size of the turning can be determined by looking at the finished product

Shown below is one of Anthony's threaders at right along with a new tool at left.



Since the "Cap" of the acorn shape is threaded onto the body, above are two examples of threading tools. At left is a new threading tool and at right is one of Anthony's threaders that has been used lots. Note the grinding to resharpen the tool. Top views are shown below.



At left is an example of the threading done on Anthony's turnings.



This tool is used to make the threads on the interior.

Something that makes this process easier is a relief turned just past where the threads end to allow the tool to be withdrawn.

The relief cut is covered when the cap is assembled on the body.



This raw nut will become the body of another “acorn shape” turning.

Using a small spindle gouge, Anthony begins to turn the shape of the nut to the finished size. The hole will become a hollow inside the turning and allow the “hiding” of small articles inside.



Once faced off, a small area is shaped to begin the location of the threading operation.



Using a parting tool a flat is turned to provide a place for the external threads.

The relief cut is made to provide for removing the threading tool as the threads are cut.





At left is the nut having the elements ready for threading. Threading commences with the tool pressed against the spinning part and slight pressure is exerted to make the threads cut rather than just making grooves.



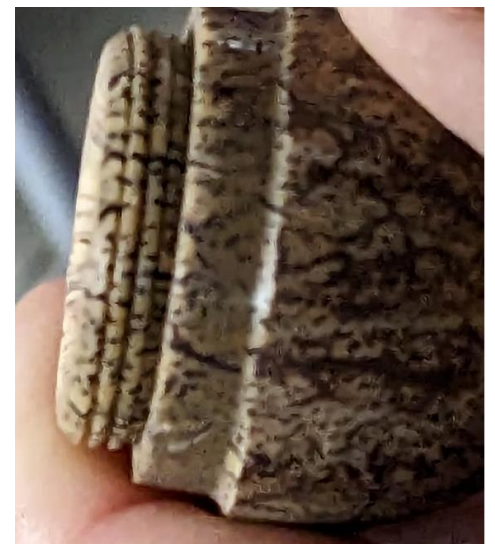
Once threaded, the interior is hollowed out. It is “safer” to leave the interior solid during the threading to allow more “backup” for the threaded part. Surprisingly, the nut composition is dense and even though what appears as a flaw, it is hard and solid.



Voila! The threads are complete, the interior is hollow and not it is time to finish turn the exterior of the “acorn”.

The final diameter has been established to the right of the threads in the photo at right.

Final smoothing, sanding and polishing is still to come.





This tool will produce the internal threads on the cap which is still to be turned.



A special purpose tool is used to hold the threading tool in the photo at right. This allows a much steadier positioning of the threading tool and makes the threading process much easier than just using a tool rest alone.

The part being turned at right is actually another “tool” that will hold the turned nut to allow final turning and polishing. The internal threads **MUST** match the threads on the outside of the turned nut to allow for a good tight fit. Anthony made the comment that this is a “*learned skill*” and does not just happen overnight.

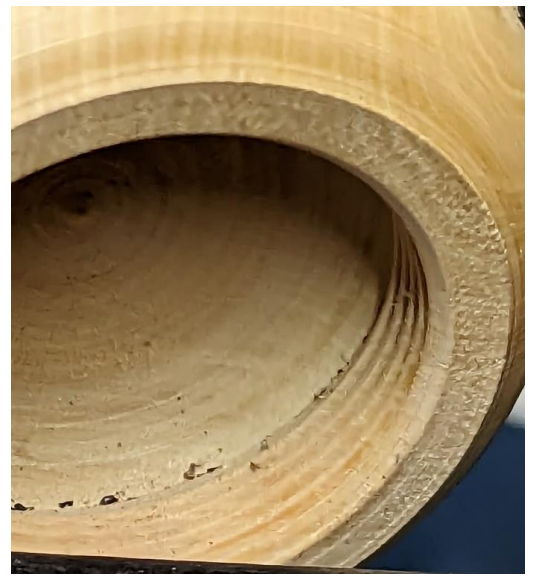


Using the spindle gouge again, the exterior of the acorn body is turned to final shape and size. Care **MUST** be used not to turn too much off the end and make a “funnel” or expose the interior. What appears to be a flaw is just the “nature of the beast” so to speak.



At left the shape of the “cap” can be seen. This was turned into the piece holding the “meat” part of the acorn. At right the interior of the cap has been hollowed slightly and another relief cut can be seen just inside the threads.

The picture at left shows the assembled pieces with the nut having been sanded and polished.



The completed assembly is shown at left with the “cap” having been disassembled from the “body” with matching threads interior and exterior.



Size comparison above to the one at left shows that some fine detail can be accomplished with practice.

Thanks to everyone who has helped with our plug orders in the past. We will be asking for help getting other projects to raise funds. All ideas are welcome along with samples.

The CLUB NEWSLETTER tab of the club website is at


<http://www.northlandwoodturners-kc.com/>

Please patronize our advertisers.



WOODCRAFT
Helping You Make Wood Work

8645 Bluejacket Rd
Lenexa, KS 66214
(913) 599-2800
M-F 9-9 · Sat 9-6 · Sun 9-5
Are you signed up for our email specials??



Woodchips
by Chip

Custom Woodturning and
Woodturning Instruction
Robert "Chip" Siskey
Woodchipsbychip@yahoo.com
(816) 858-3080



METRO
HARDWOODS, INC.

Jeff Edemann, Store Manager
4243 S Noland Rd Independence, MO 64055
816-373-1710

CRAFT SUPPLIES USA
— THE WOODTURNERS CATALOG —

1287 E. 1120 S.
Provo, UT 84606
800-551-8876
M-F, 7am-6pm, MST
Check out the Club Specials every month.
Enter "NorthlandWoodturners" when asked for club name.



Schutte
LUMBER CO.
A Landmark Company
Since 1880

816-892-3398
800-456-2148
Fax 816-753-0250

3001 Southwest Boulevard
Kansas City, MO 64108-3616
www.SchutteLumber.com

Sales@SchutteLumber.Com
816-892-3398 Phone 816-753-0250 Fax

REMINDER:
The annual dues for 2023 **are still**
only \$10.00. Advanced payments are accepted.
Checks can be made payable to
Northland Woodturners.