

Turn North



The Monthly Newsletter of the Northland Woodturners

www.northlandwoodturners-kc.com

November 2019

2019 Officers

David Bartlett, President
(816) 331-5664
dabartle23@yahoo.com

Danny Smith, Vice President
(816) 720-3781
ishear4@gmail.com

Andy Brundage, Secretary
(816) 305-32238
andybrun53@gmail.com

Leland Finley, Newsletter Editor
(816) 830-4702
leefin@netscape.net

Chip Siskey, Treasurer
(816) 858-3080
woodchipsbychip@yahoo.com

Chapter Meetings:

First Thursday of every month, 7-9 pm.
Our ADDRESS: We're south of Zona Rosa just off NW Prairie View Rd., in the old Mid-Continent Library building on the top floor. Parking is on top of the hill off Tower Drive.

**Check map on
page 2 of THIS issue.**

Coming Attractions

Newsletters on the Chapter Website:
<http://northlandwoodturners-kc.com>

Event Information:

NEEDED: Fund raising Ideas.
Cappuccino Night Nov 25
PHS High School.

The Woodworking Show Kansas City 2020

The Woodworking Shows 2020-1
Venue: **Kemper Arena**, Kansas City MO,
United States

***Please note ! All dates are
subject to changes.***

It's that time again!



The Park **Hill South Jazz Band** will play for **Cappuccino Night** on **Monday November 25** at Park Hill South High School. This is your invitation to come hear a really great bunch of High School kids do a really good job on some cool Jazz Music. **The admission is free by the way.**

You can also participate by sharing a nice wood turning for the **Cappuccino Night Silent Auction.**

If you want to participate a **sign-up sheet** will be available at the upcoming November Meeting along with more info.



OOOHH!! Lookee! Lookee! What have we here tonight?

Northland Woodturners peruse the entries in Show and Tell for the October meeting. And WHAT a SHOW!! Even a Giant Fishing Fly made it back intact. Visit last month's newsletter for preliminary details when it was still in progress. Everything from fishing lure to Christmas ornaments were on display. We will take a break from Mel's great woods articles this month to concentrate on the program feature.

Don't forget to upgrade your dues for this year if you haven't already done so.

NEW LOCATION MAP



NW Prairieview Rd on left side of map; Tower Dr. near bottom; **red line** points to bldg. entrance for Northland Woodturners.

SHOW AND TELL



Harlan Henke brought some nice earrings made from Walnut. He turned a hollow form then jigsawed the shapes to get matching grain in each pair. Nice Christmas present coming up!



Harlan's second entry was a Cherry wood Cane. Nice handle detail is visible at left.



Kent Townsend brought another version of his spoon carving. Nice work, Kent!



Darwin St. Myers turned a baby rattle from laminated Walnut and Maple. There are steel BBs inside that do rattle when shaken.



Mikeal Jones switched from segmented bowl turning to Christmas ornaments. He brought three, each of a different wood and combination.

The one on the left is natural **Cherry** with a Mesquite finial and tail piece. The center one is **Spalted Maple** with Maple finial and tail piece. On the right is **Bradford Pear** with Mesquite finial and tail piece finished natural with a different design for the finial and tail piece.

A screw eye and ornament hanger completes each piece.



V.P. Danny Smith brought a Russian Spindle and Walnut bowl. The spindle is Maple and is about 10" long. The bowl is about 2-3/4" in diameter. Both are unfinished.



Bob Irwin brought a natural bark edge Pear (?) bowl. Only one problem, according to Bob, the bowl dropped and knocked off one small piece of bark. The shop floor may still contain it since he hasn't swept yet. Still a nice job and great look.

(The editor is envious.)

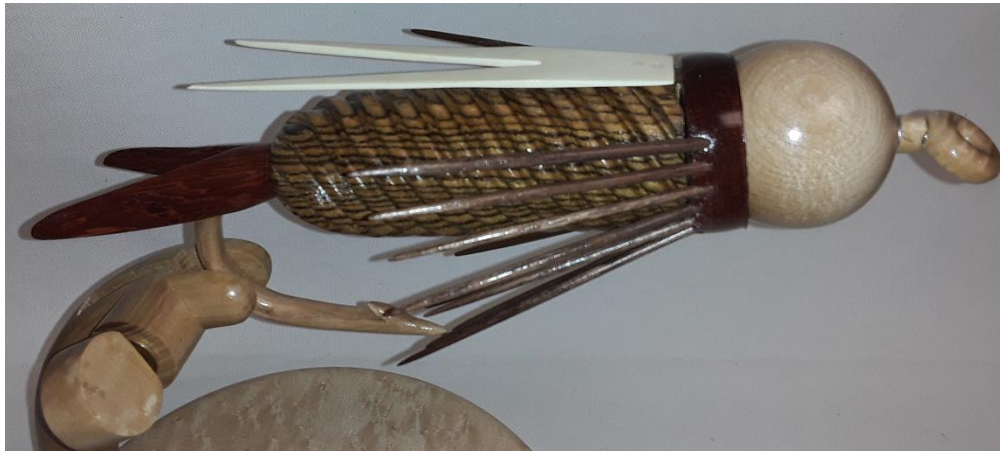


Harlan Henke also brought a Maple Bowl. This one is smaller than the one shown previously that was intended to become a sink. Note the ID in the bottom. Easy to do, it identifies WHEN an item was made. Harlan also signs with a unique signature.

Harlan's final set of turnings gave all a preview of his program feature. One was a wooden bell and the other was a multiple offset turning.



One more turning slipped by the Editor's scrutiny this time. No record of the "author", soooo... Nice job but no ID. Sorry, guy.



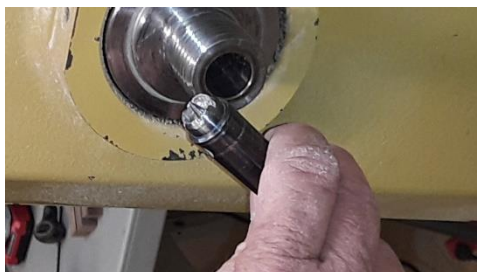
Chip Sisky brought the finished product of his effort to enlarge a fishing fly. Parts were displayed before final production last month. In order to get his project to "fly" with him to a symposium, parts were capable of being disassembled. At the left is a comparison of the real fly to the enlarged model. Processes used to make the hook were adapted from Chip's experience on a staff made previously—on a MUCH smaller scale, though!

PROGRAM HIGHLIGHTS

Former NWT President **Harlan Henke** shared one of his interesting ideas and samples for the program. One of the skills previously demonstrated by another program member was the idea of off-center turning. Harlan demonstrated this skill in turning his version of a Christmas ornament. Shown below are some of the steps he took in demonstrating the creation of these off-center turned ornaments.



Starting with a square block of Maple wood, Harlan first turned the basic shape that would become the ornament.



Using what normally would be a tailstock center, it was put into the headstock as a center. This allowed the workpiece to be held and yet slip between centers should too much pressure be used.



Once the shape progressed, lines were marked at regular intervals. These lines would become the spots where the offset turning would be done. Slits would become design elements in what would be a small tree-shaped ornament.



To enable the off-center turning process a series of three center locations were marked on the tailstock end of the turning piece. The ring mark made by the dead center became the locating position for each of the off-center locations, hence the term off-center turning.

On the right is the spinning shape using one of the off-center locations. This allows a slit to be turned into one third of the form. This is repeated on the 4th line up also



Shown below is the progression on the first “off-center” location. These slits will be colored on the finished turning. Note that only every fourth line has been turned so far. Each successive center will locate another set of slits one-third of the way around the “tree.” Depending on which way the off-centers are chosen will determine the progression around the tree as one goes up the turning.



After slitting each of the three off-centers, coloring the slits with a permanent color, and turning the final smoothness, the tree is ready for finish turning.

At right is the final shape before parting off the turning.

The final step, once parted off, is to insert the hanger. This one is made from a fish hook, using the eyelet end only. Insertion is done using a drill to make a hole in the end of the turning.

All that remains is to apply a finish that is compatible with the slit colorant and remove where the tailstock was.



The finished product.



However, Harlan proceeded to make a second ornament. This time it would be a miniature bell, including a clapper.

Once again, Harlan started with a square block.



He then proceeded to turn it round and taper as before. From there all similarity was gone. Spacing what would look like branches, he then removed the tailstock and hollowed the base.

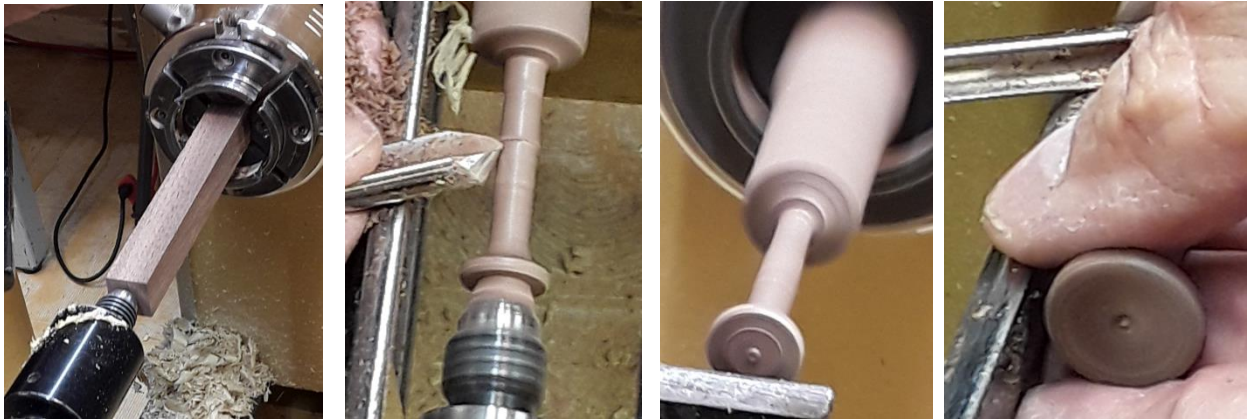


Using a special tapered tailstock, Harlan then finish turned the rest of the bell shape on top and parted it off.

The next step required drilling a hole (*next page*) in the top of the turning to insert a wire similar to the tree form turned earlier. On the end of the wire would be a loop outside and the inside would go into the “clapper”.

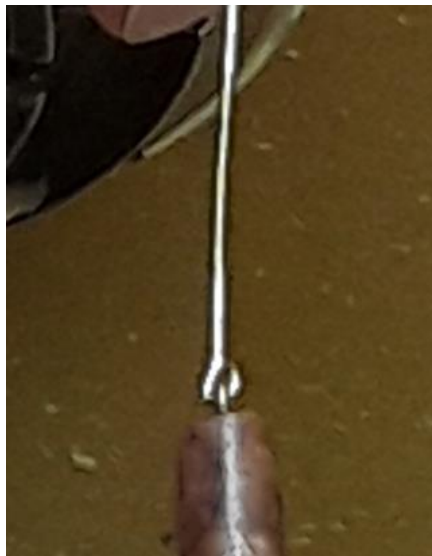


Harlan then turned his attention to the clapper. Below is the progression from square stock to parting off the finished clapper.



The Clapper wire was made into a clip of sorts. This clip was then pushed into the top of the clapper and then the hanger wire was attached and pushed through the top of the bell turning.

After inserting a wire into the clapper, another wire (*all "wires" are made from fishhooks*) was inserted through the top of the bell to make a hanger.



Thanks to everyone who has helped with our plug orders in the past. We will be asking for help getting other projects to raise funds for the club. All ideas are welcome along with samples.

The CLUB NEWSLETTER tab of the club website is at

<http://www.northlandwoodturners-kc.com/>

Please patronize our advertisers.



WOODCRAFT
Helping You Make Wood Work

8645 Bluejacket Rd
Lenexa, KS 66214
(913) 599-2800
M-F 9-9 · Sat 9-6 · Sun 9-5
Are you signed up for our email specials??



METRO
HARDWOODS, INC.

Jeff Edemann, Store Manager
4243 S Noland Rd Independence, MO 64055
816-373-1710




Schutte
LUMBER CO.
A Landmark Company Since 1880

816-892-3398
800-456-2148
Fax 816-753-0250

3001 Southwest Boulevard
Kansas City, MO 64108-3616
www.SchutteLumber.com

Sales@SchutteLumber.Com

816-892-3398 Phone 816-753-0250 Fax



Woodchips
by Chip

Custom Woodturning and
Woodturning Instruction

Robert "Chip" Siskey
Woodchipsbychip@yahoo.com
(816) 858-3080

CRAFT SUPPLIES USA
— THE WOODTURNERS CATALOG —

1287 E. 1120 S.
Provo, UT 84606
800-551-8876
M-F, 7am-6pm, MST
Check out the Club Specials every month.
Enter "NorthlandWoodturners" when asked for club name.

REMINDER:

The annual dues for 2019 **have**
increased to \$40. Advanced payments are
accepted.

Checks can be made payable to
Northland Woodturners.