

Turn North



The Monthly Newsletter of the Northland Woodturners

www.northlandwoodturners-kc.com

February 2019

2018 Officers

David Bartlett, President
(816) 331-5664
dabartle23@yahoo.com

Danny Smith, Vice President
(816) 720-3781

Email

Andy Brundage, Secretary
(816) 305-32238
andybrun53@gmail.com

Leland Finley, Newsletter Editor
(816) 830-4702
lelandfinley7@gmail.com

Chip Siskey, Treasurer
(816) 858-3080
woodchipsbychip@yahoo.com

Vice President Danny Smith opened the January meeting of the Northland Woodturners on Thursday January 3, 2019.

A good group was present for the Show and Tell and program following.

Announcements included plans for the upcoming Woodworking Show on January 18-20 at the KCI Expo Center near the KCI Airport.



Chapter Meetings:

First Thursday of every month, 7-9 pm.

Our ADDRESS: We're south of Zona Rosa just off NW Prairie View Rd., just east of the N-S drive beside the barber shop; **(Northeast Corner)** in the strip mall across from the BP station on Prairie View RD.



Coming Attractions

Newsletters on the Chapter Website:
<http://northlandwoodturners-kc.com>

Event Information:

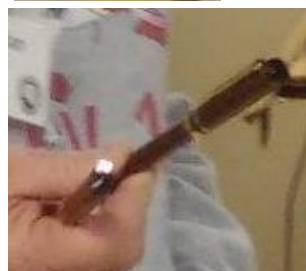
Next Month: Officer Highlights

SHOW and TELL

Dwight Herrick brought two more of his famous Duck Calls made of cherry wood.



Harlan Henke brought a Pen and pencil set with a hand-made pen box. The pen was **walnut**, the pencil was **Ipe** (*pronounced Ee-pay*). The pen box was maple. Harlan also brought a greenwood turned Maple bowl.





Dale Pollard brought a turned bottle stopper made of Oak with a bottle stopper kit.

Danny Smith brought an insulated drink cup made of Oak. The Oak part was just the outside with an insert inside.

(Ed note: pictures didn't turn out.)

Chip Sisky brought a knotty Oak burl Plate. It was about 16" in diameter and was also in display at **The Woodworking Show** in the Northland Woodturners' booth. *(see below on right of picture. Also see David Bartlett's picture.)*

Northland Woodturners at The Woodworking Shows



Northland Woodturners' booth at the Woodworking Show, January 18-20 at the KCI Expo Center on North Ambassador Drive in Kansas City North.



Chip Sisky sets up for a turning demonstration on Saturday at the Woodworking Show.

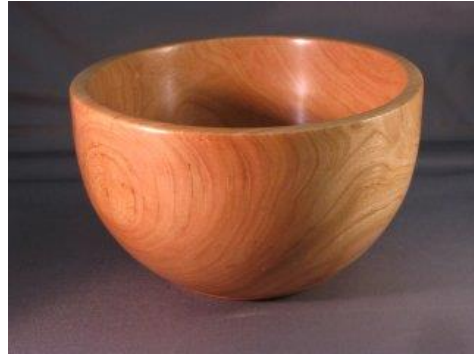
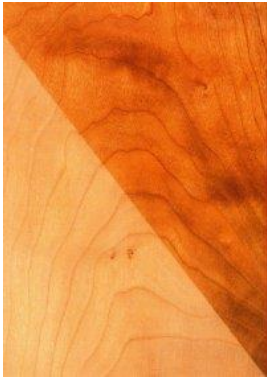
The turning would become the base for a small clock movement. The unique part was the base angle turned on the bottom. The blank was clamped in the chuck using a tapered insert to form the angle for the base. Then the blank was removed and the face

and back were turned in normal fashion.

President David Bartlett turns a spindle turning with a separated ring on each end. In the background is Chip's plate that was part of the Show and Tell at the January Club meeting.



Prunus serotina – Black cherry



Black cherry, also known as, American black cherry, wild black cherry, black rum cherry, whiskey cherry and wild cherry has a long and proud history as a furniture wood, dating to the time of the early settlers. The colonists substituted American black cherry for the expensive, imported mahogany, calling the domestic wood with similar characteristics “American mahogany”.

“Cherry is probably the most popular hardwood in the world,” said Herb McClaugherty, president and CEO of the Dean Co. “In Europe, cherry is the second most-used cabinet wood. Here in the United States, cherry ranks as our most popular cabinet wood assuming red and white oak are treated as separate woods,” he said.

Black cherry’s range in North America extends from the eastern regions of Canada to the eastern part of the United States and into Mexico. The prime cherry wood traditionally comes from the Appalachian Mountain areas, a range extending from northern Vermont to North Carolina with the very best cherry coming first from Pennsylvania and then West Virginia and New York. Cherry trees thrive in Pennsylvania because they grow in stands rimmed by hemlock, which protects the cherry trees from strong winds. Cherry is a somewhat fragile tree because it can grow tall – sometimes 20 to 25 feet to the first limb – and it can be susceptible to wind damage.

Black cherry is a straight-grained, moderately hard wood with a specific gravity (*oven dry*) of 0.53 or about 36 pounds per cubic foot. The sapwood is narrow and varies in color from white to light reddish brown. The heartwood varies from light to dark reddish brown. Growth rings are fairly distinct, and wood rays are plainly visible to the naked eye. Dark red gum streaks are sometimes present. The wood is naturally dull but takes on a fine luster when properly finished. The wood’s color darkens with age, and it can be finished to bear a strong resemblance to genuine mahogany.

Black cherry is used principally in lumber form and for manufacturing fine furniture. In the printing and engraving industries it is used to mount engravings, electrotypes, and zinc etchings. It is also used for patterns, professional and scientific instruments, piano actions, handles, wooden ware, toys, musical instruments, and of course, turning. Cherry is a wonderful wood to turn; slicing with ease and finishing beautifully.

American black cherry is not the same tree that yields the fabulous fruit. However, its fruit has been used to flavor brandy and rum, hence one of the common names rum cherry. Extracts from the bark are used in the preparation of wild cherry syrup, a popular vehicle for cough medicines. The fruit can be used for making jelly or wine. Black cherry was widely used by Native Americans who used it to treat a variety of complaints. Bark tea was used in small amounts to treat fever, colds, sore throats, laryngitis, diarrhea, etc. **The leaves, buds, twigs, seeds and bark contain glycoside prunasin, which is converted in the stomach to the highly toxic hydrocyanic acid (cyanide).** Therefore, farmers are warned and have to be careful that downed or wilted foliage from the trees are not eaten by livestock which can poison and possibly kill them.

You can read more about Black cherry at; [Black cherry on the Wood-database](#) and [Black cherry on Wikipedia.org](#).

Written by – Mel Bryan

Program Highlights

V.P. Danny Smith was featured at the January meeting on the program. His first turning was to rough out a blank that would become the outside for an insulated drink cup. The center was first bored with a forstner bit then turned to the taper shown here.

Shown below is the rough turning to be smoothed and finished later at home. This was similar to the Oak one he displayed for Show and Tell.



His next turning used the Mandrel Plate he received in December at the club meeting. It is used to hold a piece that is long, cylindrical and has a hole through the middle, such as a pepper mill blank.



Danny used the blank shown at the left which was to become a pepper mill.



First, two temporary spacer chucks ends needed to be fastened to the mandrel. These chucks would go into the ends of the peppermill blank after a hole had been bored for the exit of pepper from the mill.

Then the forming and decorative shape would be turned on the outside of the blank.



Shown above are the sequential steps leading to the turned blank at the left. All that remains is some fine sanding and finishing before the pepper mill mechanism is mounted on top.

<https://www.woodturner.org/page/Safety>

This website lists 20 some safety rules for Woodturners. Most are common-sense but some may require more scrutiny and attention to detail.

Careless work habits can creep into one's hobby over time. When you turn, check out the list on this website and see how YOU measure up.



Join Us
RALEIGH, NORTH CAROLINA
JULY 11-14, 2019

AAW's 33rd Annual Int'l
WOODTURNING SYMPOSIUM

Demonstrations, Panel Discussions,
Exhibitions, Auctions, Trade Show, More!

2021 Symposium - Omaha, NE

Thursday, July 15, 2021 through Sunday, July 18, 2021

Omaha, Nebraska

More information will be shared as it becomes available.

The Editor promises better pictures for Show and Tell next month!!!

Damage Control Plugs

Thanks to everyone who's helped with our plug orders. Our inventory is getting low so we will be asking for help getting restocked. There will be boxes of blanks at the next meeting. Please consider taking a box home and turning them by the following meeting. Here's a table with the plug dimensions for reference.

It's also on the CLUB NEWS tab of the club website at

<http://www.northlandwoodturners-kc.com/>

Plug	Lg Dia	Length	Sm Dia
#1	1 1/2	7	5/8
#2	2 1/4	4	1 1/4
#3	3 1/4	3 1/2	2 1/8
#4	4 1/4	5 3/4	2 3/4
#5	6 1/2	6	4 3/4



WOODCRAFT
Helping You Make Wood Work

8645 Bluejacket Rd
Lenexa, KS 66214
(913) 599-2800
M-F 9-9 · Sat 9-6 · Sun 9-5
Are you signed up for our email specials??



METRO
HARDWOODS, INC.

Jeff Edemann, Store Manager
4243 S Noland Rd Independence, MO 64055
816-373-1710



Schutte
LUMBER CO.


A Landmark Company
Since 1880

816-892-3398
800-456-2148
Fax 816-753-0250

3001 Southwest Boulevard
Kansas City, MO 64108-3616
www.SchutteLumber.com

Sales@SchutteLumber.Com

816-892-3398 Phone 816-753-0250 Fax



Woodchips
by Chip

Custom Woodturning and
Woodturning Instruction

Robert "Chip" Siskey
Woodchipsbychip@yahoo.com
(816) 858-3080

CRAFT SUPPLIES USA
— THE WOODTURNERS CATALOG —

1287 E. 1120 S.
Provo, UT 84606
800-551-8876
M-F, 7am-6pm, MST
Check out the Club Specials every month.
Enter "NorthlandWoodturners" when asked for club name.

REMINDER:

The annual dues for **2019** are **\$10.**

Checks can be made payable to
Northland Woodturners.