

# Turn North



The Monthly Newsletter of the Northland Woodturners

[www.northlandwoodturners-kc.com](http://www.northlandwoodturners-kc.com)

March 2018

## 2018 Officers

Dave Halter, President  
(816) 233-9606  
[herknav@ponyexpress.net](mailto:herknav@ponyexpress.net)  
David Bartlett, Vice President  
(816) 3331-5664  
[dabartle23@yahoo.com](mailto:dabartle23@yahoo.com)  
Andy Brundage, Secretary  
(816) 305-32238  
[andybrun53@gmail.com](mailto:andybrun53@gmail.com)  
Leland Finley, Newsletter Editor  
(816) 830-4702  
[lelandfinley7@gmail.com](mailto:lelandfinley7@gmail.com)  
Chip Siskey, Treasurer  
(816) 858-3080  
[woodchipsbychip@yahoo.com](mailto:woodchipsbychip@yahoo.com)

## Chapter Meetings:

First Thursday of every month, 7-9 pm.  
NEW address.

**We've MOVED across the drive and around the corner to the East on the back of the building (Northeast Corner)**

We're south of Zona Rosa just off NW Prairie View Rd., just east of the N-S drive beside the barber shop.

## Coming Attractions

Newsletters on the Chapter Website:  
<http://northlandwoodturners-kc.com>

### Event Information:

**.Bring your favorite DESSERT- Pie, Cake, Cookies, Pudding, Fruit, etc. and we'll provide the ice cream.**

**ALSO, bring your sample of a SKEW CHISEL TURNING using ONLY a skew chisel.**

## Turn North for July 2018

Vice President Dave Bartlett opened the June meeting with announcements and Show and Tell. The July meeting will be an ice cream and dessert party with

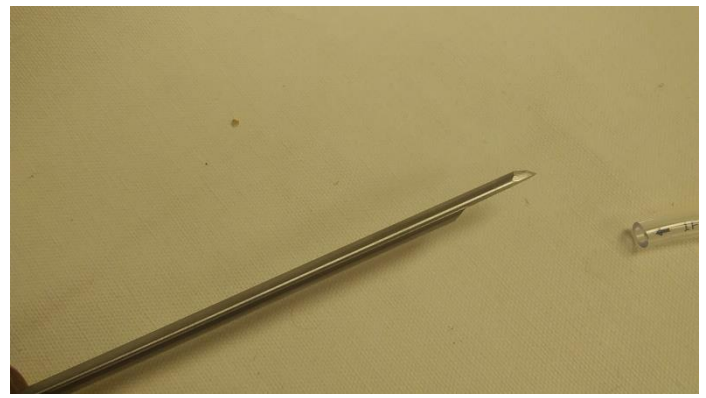
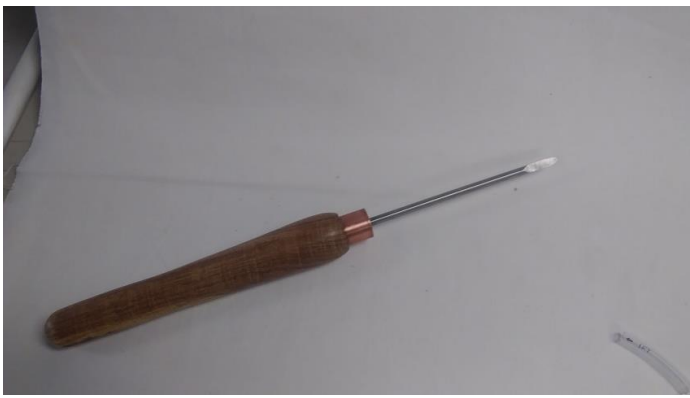


Show and Tell showing your Skew Chisel turnings made only with a Skew Chisel. After Show and Tell Mel Bryan demonstrated what can be done with a skew chisel and explained some of the nomenclature and procedures as he turned a variety of items.

## Show and Tell



Mikeal Jones brought a shop-made ball sander for finishing the bottom of the Spalted Maple vase shown above. He also brought some tools used to turn the vase. *See page 2.*



Tooling and pen kit used for making a pen on the lathe. The tools above are used in turning the pens.

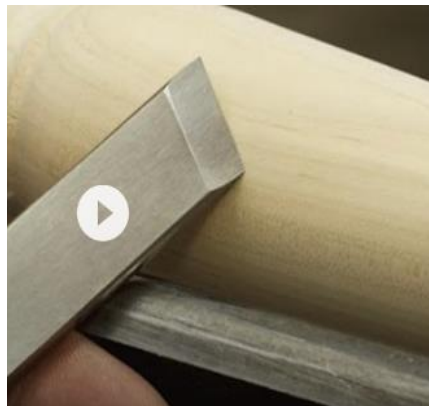


## Program Highlights

Mel Bryan was the featured program person for June. The Skew Chisel was the topic and was used for demonstrating how many ways a turning can be made using JUST a Skew Chisel. Several skew chisels were used by Mel during his program. The pictures below and on following pages highlight how he demonstrated the use of skew chisels in wood turning.



Using his “giant” Skew, Mel explained the angles used for the sharpened edge as well as the slant to the cutting edge. Surprisingly, a skew does NOT need to have an angled cutting edge to be considered a skew chisel. The most important point made by Mel was the need



to “ride on top and ‘shave’ the cut”. This uses the lower side of the cutting edge (*heel*) to slide on the turned piece and the sharp edge to cut like a knife instead of gouging the wood off. This provides a much smoother cut and eliminates, at times, any sanding of the surface.







These pictures show the same turning—end on left finished by scraping; either a gouge or a skew chisel. Surface on the right finished using a “skew cut” just below center so the chisel doesn’t grab or bite into the end grain. Notice the flaw on the back side of the turning. Both pieces are at the relatively same position (*note the marking near the live center and the dark spot on the back side of the turning*). For more details see Allan Batty’s video on woodturning using a skew chisel.



Check the smoothness of the cylindrical part and the sharpness of the cuts into the square end. Sharp tools are a must when using a skew chisel.

Layout for making beads is simple. Use the angled point (*toe*) of the skew chisel to cut into the wood. Equal spacing helps to make the beads uniform and easier to finish.



Next, Mel used the skew to form a thin washer and separated it from the rest of the spindle. Again, SHARP tools are important for quality turning results.

After cutting the washer loose, he laid out beads on the tailstock end of the spindle. Again, only the skew chisel was used to perform these cuts.



Check the smoothness of these beads WITHOUT sanding of any kind. (*could be the skill of the operator too!!*)



To finish the tailstock end of the turning, Mel turned a concave area between the end and the last cut made previously. Remembering the key to skew turning is to begin on the “heel” of the blade and rock up into the wood to allow the knife cut or sliding cut while the bevel of the grind rides on the wood. Practice, Practice, Practice is the key to using the skew chisel. References to Allan Batty were made several times by Mel as he progressed through the sample piece.



Mel’s final demo was to “duplicate” an existing turning using just the skew chisel. After beginning the layout and turning the beads and coves (*see sample below*), vees and getting the layout as close as possible, the end result was passed around. (*see above right*) Original is at top with duplicate at bottom. *Not bad for 10-15 minutes in a demo situation.*

*Sample picture at left taken from*

### “Tips for better spindle turning”



<https://www.woodmagazine.com/woodworking-plans/lathe-and-turning/tips-for-better-spindle-turning>

**Next meeting bring YOUR samples turned with ONLY the SKEW CHISEL and SHOW and TELL!!**

***I Dare YOU!!***

## Damage Control Plugs

Thanks to everyone who's helped with our plug orders. Our inventory is getting low so we will be asking for help getting restocked. There will be boxes of blanks at the next meeting. Please consider taking a box home and turning them by the following meeting. Here's a table with the plug dimensions for reference.

It's also on the CLUB NEWS tab of the club website at

<http://www.northlandwoodturners-kc.com/>

Plug	Lg Dia	Length	Sm Dia
#1	1 1/2	7	5/8
#2	2 1/4	4	1 1/4
#3	3 1/4	3 1/2	2 1/8
#4	4 1/4	5 3/4	2 3/4
#5	6 1/2	6	4 3/4



8645 Bluejacket Rd  
Lenexa, KS 66214  
(913) 599-2800  
M-F 9-9 · Sat 9-6 · Sun 9-5  
Are you signed up for our email specials??



Jeff Edemann, Store Manager  
4243 S Noland Rd Independence, MO 64055  
816-373-1710



A Landmark Company  
Since 1880

816-892-3398  
800-456-2148  
Fax 816-753-0250  
3001 Southwest Boulevard  
Kansas City, MO 64108-3616  
[www.SchutteLumber.com](http://www.SchutteLumber.com)

[Sales@SchutteLumber.Com](mailto:Sales@SchutteLumber.Com)

816-892-3398 Phone 816-753-0250 Fax



**Woodchips**  
by Chip

Custom Woodturning and  
Woodturning Instruction

Robert "Chip" Siskey  
[Woodchipsbychip@yahoo.com](mailto:Woodchipsbychip@yahoo.com)  
(816) 858-3080

**CRAFT SUPPLIES USA**  
— THE WOODTURNERS CATALOG —

1287 E. 1120 S.  
Provo, UT 84606  
800-551-8876  
M-F, 7am-6pm, MST  
Check out the Club Specials every month.  
Enter "NorthlandWoodturners" when asked for club name.

### REMINDER:

The annual dues for 2018 are \$10.

Checks can be made payable to  
Northland Woodturners.