

# Turn North



The Monthly Newsletter of the Northland Woodturners

[www.northlandwoodturners-kc.com](http://www.northlandwoodturners-kc.com)

April 2018

## 2018 Officers

Dave Halter, President  
(816) 233-9606  
[herknav@ponyexpress.net](mailto:herknav@ponyexpress.net)

David Bartlett, Vice President  
(816) 3331-5664  
[dabartle23@yahoo.com](mailto:dabartle23@yahoo.com)

Andy Brundage, Secretary  
(816) 305-32238  
[andybrun53@gmail.com](mailto:andybrun53@gmail.com)

Leland Finley, Newsletter Editor  
(816) 830-4702  
[lelandfinley7@gmail.com](mailto:lelandfinley7@gmail.com)

Chip Siskey, Treasurer  
(816) 858-3080  
[woodchipsbychip@yahoo.com](mailto:woodchipsbychip@yahoo.com)



## Chapter Meetings:

First Thursday of every month, 7-9 pm.  
NEW address.

**We've MOVED across the drive and around the corner to the East on the back of the building (Northeast Corner)**

We're south of Zona Rosa just off NW Prairie View Rd., just east of the N-S drive beside the barber shop.

President Dave Halter called the meeting to order in the new facilities for the March meeting. After reviewing the booth activities at this year's **The Woodworking Show**, he called for the regular **Show and Tell** presentations. Shown below are the items on display for **Show and Tell**.

## Show and Tell

**Harlan Henke** brought a natural-edge bowl turned out of black oak. It had a lacquer finish.



## Coming Attractions

Newsletters on the Chapter Website:  
<http://northlandwoodturners-kc.com> and  
click on "**Newsletter**".

## Event Information:

.All members are encouraged to bring a new turning and share with the club what it is and how it was made.



Another view looking inside the bowl shows the grain at the center of the bowl.



**Danny Smith** brought three different kinds of turnings. The first was an **ash travel mug shell** into which he fitted an insert from a plastic mug.

The second was a **pepper mill base** made from a piece of apple wood, and the third, at left, was a **carbide turning tool handle** made from a piece of curly maple. That tool came in handy later during the program when it was used to clean up a portion of the project being made.



**Harlan Henke** brought two walnut bowls that he had turned from some “scraps” lying around his shop. Nicely turned, he used a lacquer finish.

Note the grain inside at the bottom of the “bark-on” bowl.







**Tony Mansheim** brought a lamp turned from walnut and oak. The base was oak and the lamp has four medallions inserted in the upper part of the turning. They were inserted into holes drilled AFTER the lamp was turned. A hole was drilled through the center for the electrical wiring. Finish is lacquer.





**Dave Peterson** brought a salt and pepper set made from Red Mahogany. Stain was applied to the pepper shaker. The base has turned wood plugs to allow filling of the set. Finished with mineral oil on the outside provided a food-safe finish.



**Andy Brundage** brought his finished oak tool handle, assembled and complete which was started during **The Woodworking Show** in February. A piece of brass tubing was used for a ferrule and decorative lines were “burned” into the handle for decoration using a piece of wire.



## Program Highlights



Northland Wood turner Treasurer **Chip Siskey** presented a program showing how to select and turn a previously roughed-in turning. The blank in his left hand was used rather than the other turning. Several steps had to be done before the turning could be accomplished.

First off a piece to insert into the bowl had to be turned to support the bowl on the headstock side. While turning this piece, several dull tools from a set that the club has “inherited” needed to be sharpened.

Sharpening notes were shared with the group as Chip sharpened the tools.



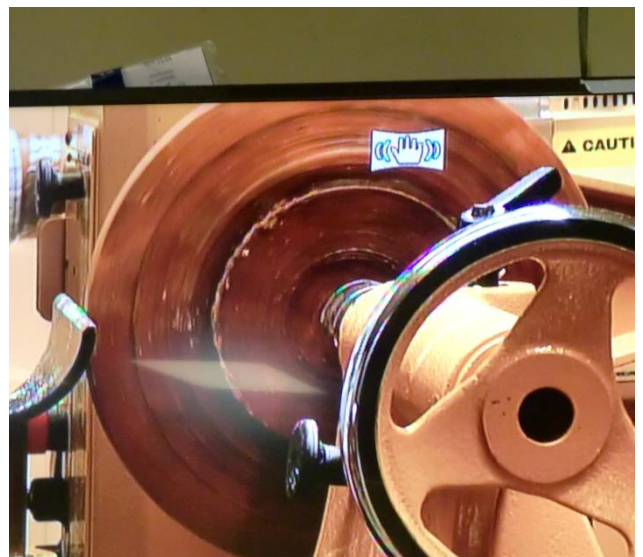
Once the tools were sharpened, the plug could be turned.



Note the shape of the tool being used at left to turn the mounting insert.

This was originally a blunt nose gouge that was modified to have a fingernail grind.

Next, the rough blank was mounted and trued to general shape. First a chuck mount was turned into what would become the bottom of the turning.





Once the chuck mounting was turned, the rough blank is ready to be mounted on the lathe. Important safety points are made here by Chip as the blank is mounted.

Note the dark center on the blank in the picture at the right. This is where the plug turned earlier to hold the blank didn't quite fit the curve as the chuck mount was turned at left.



Below, Chip turns the underneath (after it is finished) side of the dish. This is an operation that needs to be done carefully since there is no support on the tailstock side of the piece.

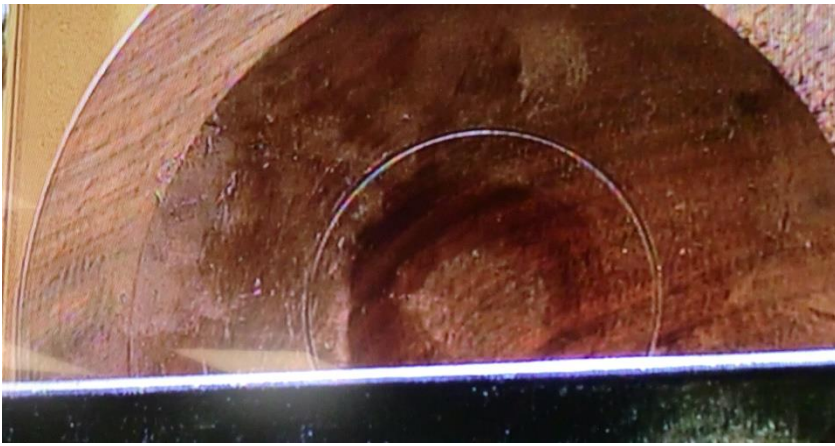


A large cone center has been mounted to insure safety and better support while turning. Notice the shape taking place on the lower surface of the dish.



Sort of a Roman Ogee shape is being turned into the wood.





Visible here is the ring left by the cone center used to support the turning while finishing the back side.



This is a close-up of Danny Smith's tool that was used by Chip to do some detail turning inside the dish.



Once the inside is turned to the shape desired, it is time to turn the piece over and finish the underneath/back side.

Once again, the plug used to begin this turning will be reshaped to fit the inside and allow it to be mounted with the bottom side against the tail stock.

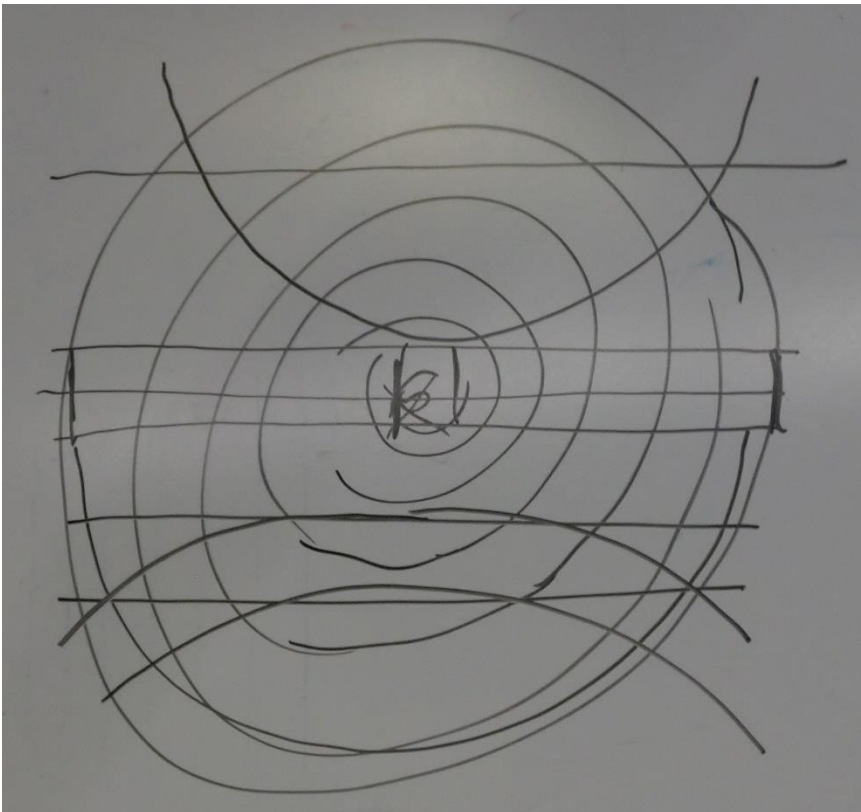


Once mounted again, the rim for the dish/plate to sit on is shaped and the center is finished.



After removing the center support on the bottom, only sanding is needed to finish the turning.

This blank was one from Doc's estate sale. Numerous other blanks are still available at the Club site for other turnings/demonstrations.



One final note—Chip illustrated how to cut a log to prevent problems with the center pith of a tree when selecting pieces for turning.

The section through the center will produce two nice pieces on either side of the tree center, while the curved part above and below will provide good bowl blanks.

Depending on which piece is selected will determine the way the wood will “warp” when it dries if it is a green-wood turning.

It will also affect the shape of the grain pattern in the turning with the upper piece giving a tighter grain pattern than the lower one.



## Damage Control Plugs

Thanks to everyone who's helped with our plug orders. Our inventory is getting low so we will be asking for help getting restocked. There will be boxes of blanks at the next meeting. Please consider taking a box home and turning them by the following meeting. Here's a table with the plug dimensions for reference.

It's also on the CLUB NEWS tab of the club website at

<http://www.northlandwoodturners-kc.com/Plus%20Size%20and%20Cut%20Listmht>

Plug	Lg Dia	Length	Sm Dia
#1	1 1/2	7	5/8
#2	2 1/4	4	1 1/4
#3	3 1/4	3 1/2	2 1/8
#4	4 1/4	5 3/4	2 3/4
#5	6 1/2	6	4 3/4



**WOODCRAFT**  
*Helping You Make Wood Work*

8645 Bluejacket Rd  
Lenexa, KS 66214  
(913) 599-2800  
M-F 9-9 · Sat 9-6 · Sun 9-5  
Are you signed up for our email specials??



**METRO**  
HARDWOODS, INC.

Jeff Edemann, Store Manager  
4243 S Noland Rd Independence, MO 64055  
816-373-1710




**Schutte**  
LUMBER CO.  
*A Landmark Company Since 1880*

816-892-3398  
800-456-2148  
Fax 816-753-0250

3001 Southwest Boulevard  
Kansas City, MO 64108-3616  
[www.SchutteLumber.com](http://www.SchutteLumber.com)

[Sales@SchutteLumber.Com](mailto:Sales@SchutteLumber.Com)

816-892-3398 Phone 816-753-0250 Fax



**Woodchips**  
by Chip

Custom Woodturning and  
Woodturning Instruction

Robert "Chip" Siskey  
[Woodchipsbychip@yahoo.com](mailto:Woodchipsbychip@yahoo.com)  
(816) 858-3080

**CRAFT SUPPLIES USA**  
— THE WOODTURNERS CATALOG —

1287 E. 1120 S.  
Provo, UT 84606  
800-551-8876  
M-F, 7am-6pm, MST  
Check out the Club Specials every month.  
Enter "NorthlandWoodturners" when asked for club name.

**REMINDER:**

The annual dues for **2018** are **\$10.**

Checks can be made payable to  
**Northland Woodturners.**