

# Turn North

The Monthly Newsletter of the Northland Woodturners



[www.northlandwoodturners-](http://www.northlandwoodturners-)

May 2017

## 2016 Officers

Dave Halter, President

(816) 233-9606

[Herknave@ponyexpress.net](mailto:Herknave@ponyexpress.net)

David Bartlett, Vice President

(816) 331-5664

[dabartle23@yahoo.com](mailto:dabartle23@yahoo.com)

Andy Brundage, Secretary & Newsletter

Editor (816) 305-3238

[andybrun53@gmail.com](mailto:andybrun53@gmail.com)

Chip Siskey, Treasurer

(816) 858-3080

[woodchipsbychip@yahoo.com](mailto:woodchipsbychip@yahoo.com)

## Chapter meetings:

First Thursday of each month, 7-9 pm.

Our address is:

**6737 NW Tower Drive  
Platte Woods Mo. 64151**

We're south of Zona Rosa just off NW  
Prairie View Rd., just east of Platte  
Woods Police department and City Hall  
on the north side of the mall.

## Coming Attractions

AAW Symposium ..... Jun 22-25

**Newsletters on the chapter website:**

<http://northlandwoodturners-kc.com>

**Event Information:**

<http://www.woodturner.org/?page=2017KC>

<http://kcwoodturners.org/2017-aaw-symposium/>

## Business Meeting

The meeting was opened by Chapter President Dave Halter. Everyone is reminded that volunteers are needed for the 2017 AAW Symposium to be held in Kansas City June 22-25:

- Videographers and demo assistants – will be trained but will be tied down to demo assigned.
- Sign up through AAW Website or Chip Siskey for our club
- Volunteers are needed to work with veterans and youth training – certification in Industrial Arts Education needed.
- Volunteers will be restricted in access if they do not pay entry fee.
- Student discounts are available see website.
- Lathe raffle – proceeds help local clubs based on volunteer participation.
- Richard McCartney is the local Conference Coordinator.
- Chip Siskey is our Club Coordinator.

Rustic Hardwoods in King City has very reasonable turning blanks on clearance sale.

**Final Item: Plug for plugs – we need #1's!!!**

Sean McMann of the Kansas City club spoke briefly about the upcoming symposium. There are 3200 volunteer time slots to fill. Non AAW members may volunteer in non-demonstration areas. A raffle will be held for a lathe \$5.00 ticket. Proceeds go to local clubs. Bowls are needed for "Beads of Courage". Program is not active in KC area, but help kids with major challenges across the country. Target dimensions are 4x4x6 inches. There is currently a 50% discount for first time AAW member. A good deal so take advantage of it.





### Lidded Bowl by David Bartlett

David began with a blank between centers for the lid. Once rough shaped he moved it to a chuck for final shaping. He then took the finished lid and fit it to a rough bowl blank. He shaped and finished the bowl on a scroll chuck. He then used a "Jumbo Jaw" to clean the bottom of the bowl. He finished the bowl with Qualasole.

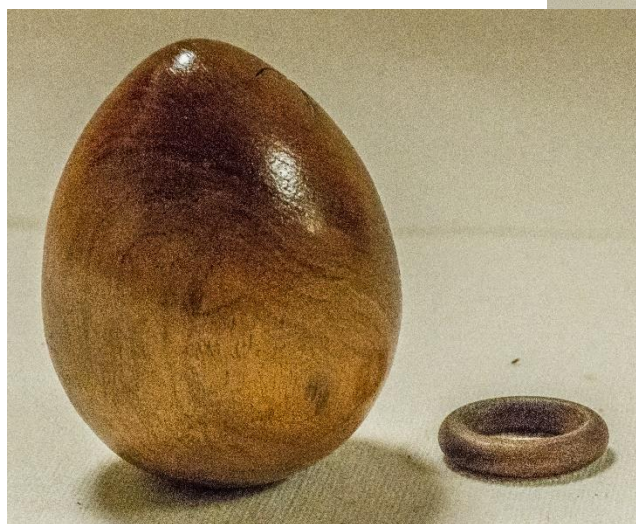
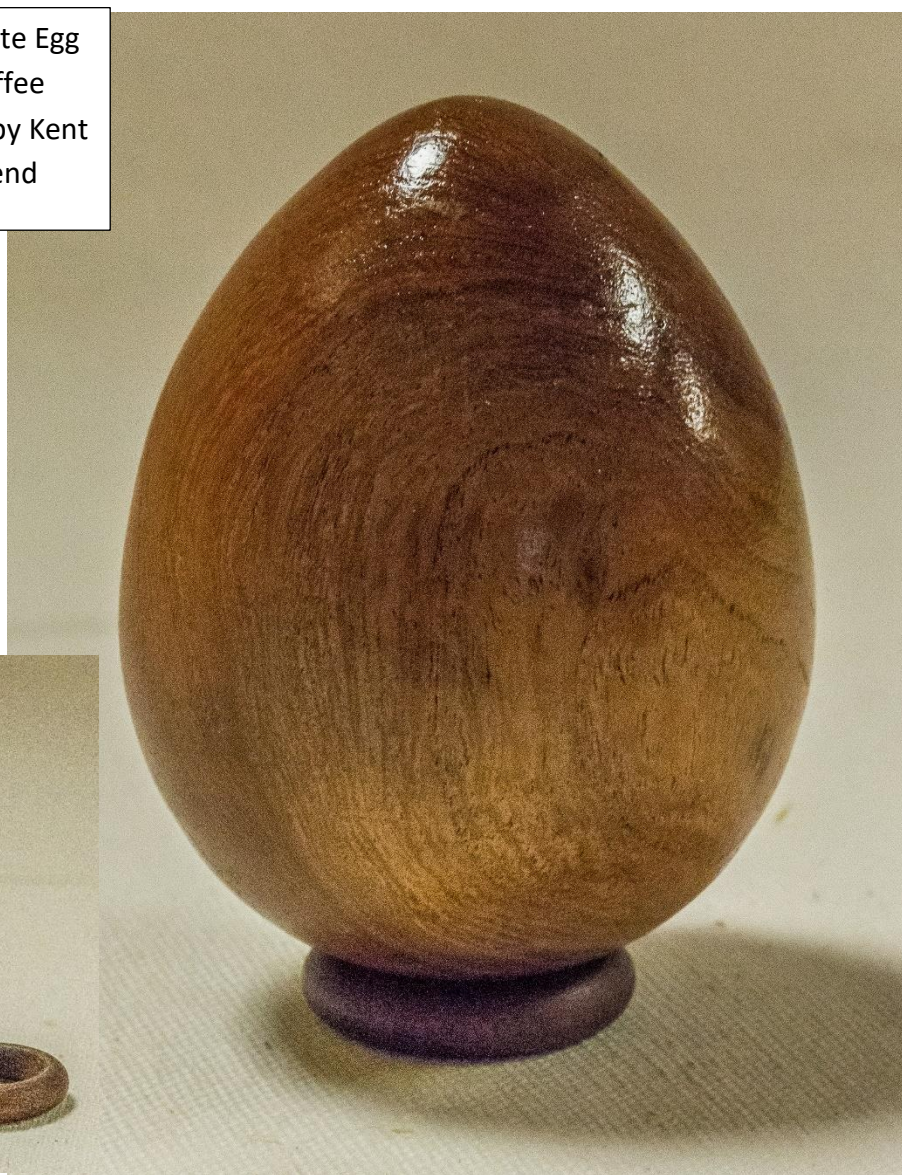
David suggested leaving the lid loose for the "Bead of Courage" containers so they could be easily removed.



## Show and Tell



Mesquite Egg  
and Coffee  
Scoop by Kent  
Townsend







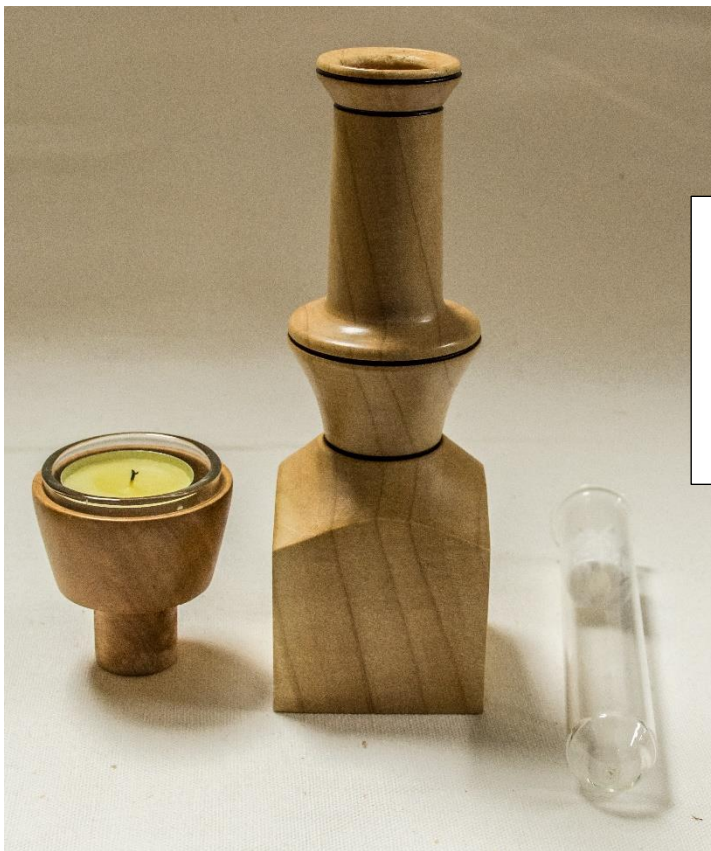
Fishing Lure  
by Tony Pore



Hard Maple  
Beehive Box by  
David Bartlett







Maple and Walnut  
Bowl, Maple Box with  
Walnut Top, and  
Maple Bud Vase /  
Candle Holder by  
Bruce Stevenson.







### Damage Control Plugs

Thanks to everyone who's helped with our plug orders. Our inventory is getting low so we will be asking for help getting restocked. There will be boxes of blanks at the next meeting. Please consider taking a box home and turning them by the following meeting.

Here's a table with the plug dimensions for reference. It's also on the Club News tab of the club website at

<http://www.northlandwoodturners-kc.com/Plus%20Size%20and%20Cut%20List.mht>


Plug	Lg Dia	Length	Sm Dia
#1	1 1/2	7	5/8
#2	2 1/4	4	1 1/4
#3	3 1/4	3 1/2	2 1/8
#4	4 1/4	5 3/4	2 3/4
#5	6 1/2	6	4 3/4

### *Chapter Sponsors and Supporters*



**WOODCRAFT**  
Helping You Make Wood Work

8645 Bluejacket Rd  
Lenexa, KS 66214  
(913) 599-2800  
M-F 9-9 · Sat 9-6 · Sun 9-5  
Are you signed up for our email specials??



**Woodchips**  
by Chip

Custom Woodturning and  
Woodturning Instruction

Robert "Chip" Siskey  
Woodchipsbychip@yahoo.com  
(816) 858-3080



**METRO**  
HARDWOODS, INC.

Jeff Edemann, Store Manager  
4243 S Noland Rd Independence, MO 64055  
816-373-1710

**CRAFT SUPPLIES USA**  
— THE WOODTURNERS CATALOG —

1287 E. 1120 S.  
Provo, UT 84606  
800-551-8876  
M-F, 7am-6pm, MST  
Check out the Club Specials every month.  
Enter "NorthlandWoodturners" when asked for club name.



**Schutte**  
LUMBER CO.  
A Landmark Company  
Since 1880

816-892-3398  
800-456-2148  
Fax 816-753-0250

3001 Southwest Boulevard  
Kansas City, MO 64108-3616  
www.SchutteLumber.com

[Sales@SchutteLumber.Com](mailto:Sales@SchutteLumber.Com)

816-892-3398 Phone 816-753-0250 Fax