

# Turn North

The Monthly Newsletter of the Northland Woodturners



[www.northlandwoodturners-](http://www.northlandwoodturners-)

November 2016

## 2016 Officers

Dave Halter, President

(816) 233-9606

[Herknave@ponyexpress.net](mailto:Herknave@ponyexpress.net)

David Bartlett, Vice President

(816) 331-5664

[dabartle23@yahoo.com](mailto:dabartle23@yahoo.com)

Andy Brundage, Secretary & Newsletter

Editor (816) 305-3238

[andybrun53@gmail.com](mailto:andybrun53@gmail.com)

Chip Siskey, Treasurer

(816) 858-3080

[woodchipsbychip@yahoo.com](mailto:woodchipsbychip@yahoo.com)

## Coming Attractions

..... TBD

Newsletters on the chapter website:

<http://northlandwoodturners-kc.com>

## Business Meeting

The meeting was opened by Treasurer Chip Siskey and Vice President David Bartlett. Everyone was reminded that volunteers were needed for the 2017 AAW Symposium to be held in Kansas City June 16-18. The show also needs climate controlled storage for up to 35 pallets. Volunteers are needed to work with veterans.

The Kansas City Woodworkers will hold their annual auction on November 8.

The Woodworkers Tools Show has been moved to January 20-22. It will be held at the KCI Expo center.

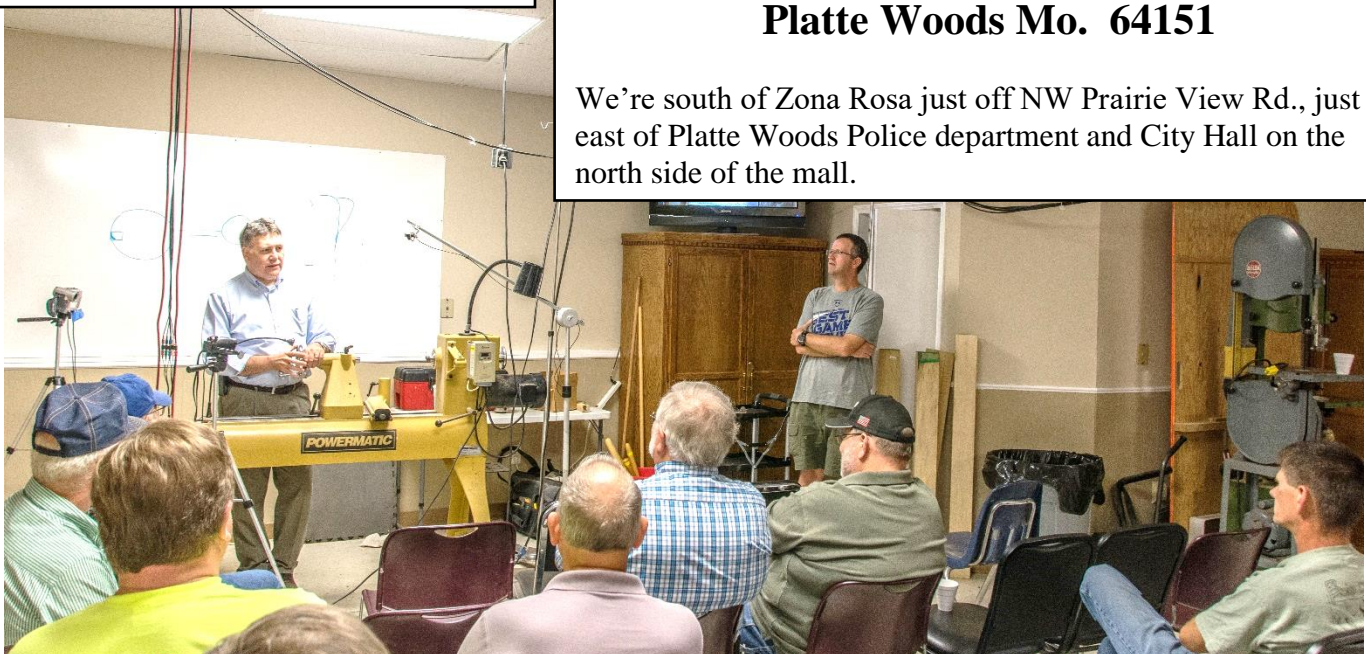
David Bartlett has requested a volunteer to demonstrate turning Christmas Ornaments for the November meeting.

## Chapter meetings:

First Thursday of each month, 7-9 pm. Our new address is:

**6737 NW Tower Drive  
Platte Woods Mo. 64151**

We're south of Zona Rosa just off NW Prairie View Rd., just east of Platte Woods Police department and City Hall on the north side of the mall.







### Demonstration

This month's presentation was finishing bowl bottoms. It was a joint effort by David Bartlett and Chip Siskey. David turned a bowl and demonstrated reversing with a jam chuck to hold the bowl while removing the tenon.



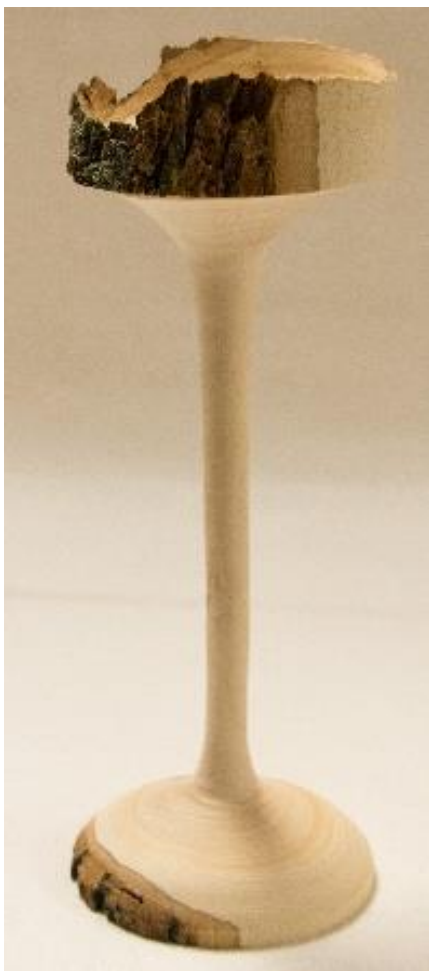
Chip turned a bowl and finished the bottom by disguising a mortice with decorative rings. This reduced the need to reverse after hollowing. David also discussed other holding options such as Jumbo Jaws, Longworth Chuck, and various fixtures. Chip followed up with vacuum chucking options and suggestions.





## Show and Tell

Mel Bryan turned a Roman Canteen of  
White Oak and Rosewood.



Vaughn  
Bradley turned  
a natural edge  
goblet.



### Damage Control Plugs

Thanks to everyone who's helped with our plug orders. Our inventory is getting low so we will be asking for help getting restocked. There will be boxes of blanks at the next meeting. Please consider taking a box home and turning them by the following meeting.

Here's a table with the plug dimensions for reference. It's also on the Club News tab of the club website at

<http://www.northlandwoodturners-kc.com/Plus%20Size%20and%20Cut%20List.mht>


Plug	Lg Dia	Length	Sm Dia
#1	1 1/2	7	5/8
#2	2 1/4	4	1 1/4
#3	3 1/4	3 1/2	2 1/8
#4	4 1/4	5 3/4	2 3/4
#5	6 1/2	6	4 3/4

### *Chapter Sponsors and Supporters*



**WOODCRAFT**  
Helping You Make Wood Work

8645 Bluejacket Rd  
Lenexa, KS 66214  
(913) 599-2800  
M-F 9-9 · Sat 9-6 · Sun 9-5  
Are you signed up for our email specials??



**Woodchips**  
by Chip

Custom Woodturning and  
Woodturning Instruction

Robert "Chip" Siskey  
Woodchipsbychip@yahoo.com  
(816) 858-3080



**METRO**  
HARDWOODS, INC.

Jeff Edemann, Store Manager  
4243 S Noland Rd Independence, MO 64055  
816-373-1710

**CRAFT SUPPLIES USA**  
— THE WOODTURNERS CATALOG —

1287 E. 1120 S.  
Provo, UT 84606  
800-551-8876  
M-F, 7am-6pm, MST  
Check out the Club Specials every month.  
Enter "NorthlandWoodturners" when asked for club name.



**Schutte**  
LUMBER CO.  
A Landmark Company  
Since 1880

816-892-3398  
800-456-2148  
Fax 816-753-0250

3001 Southwest Boulevard  
Kansas City, MO 64108-3616  
www.SchutteLumber.com

[Sales@SchutteLumber.Com](mailto:Sales@SchutteLumber.Com)

816-892-3398 Phone 816-753-0250 Fax