

Turn North

The Monthly Newsletter of the Northland Woodturners



www.northlandwoodturners-

October 2016

2015 Officers

Dave Halter, President

(816) 233-9606

Herknave@ponyexpress.net

David Bartlett, Vice President

(816) 331-5664

dabartle23@yahoo.com

Andy Brundage, Secretary & Newsletter

Editor (816) 305-3238

andybrun53@gmail.com

Chip Siskey, Treasurer

(816) 858-3080

woodchipsbychip@yahoo.com

Chapter meetings:

First Thursday of each month, 7-9 pm.

Our new address is:

**6737 NW Tower Drive
Platte Woods Mo. 64151**

We're south of Zona Rosa just off NW
Prairie View Rd., just east of Platte
Woods Police department and City Hall
on the north side of the mall.

Coming Attractions

.....TBD

**Newsletters on the chapter website:
<http://northlandwoodturners-kc.com>**

Business Meeting

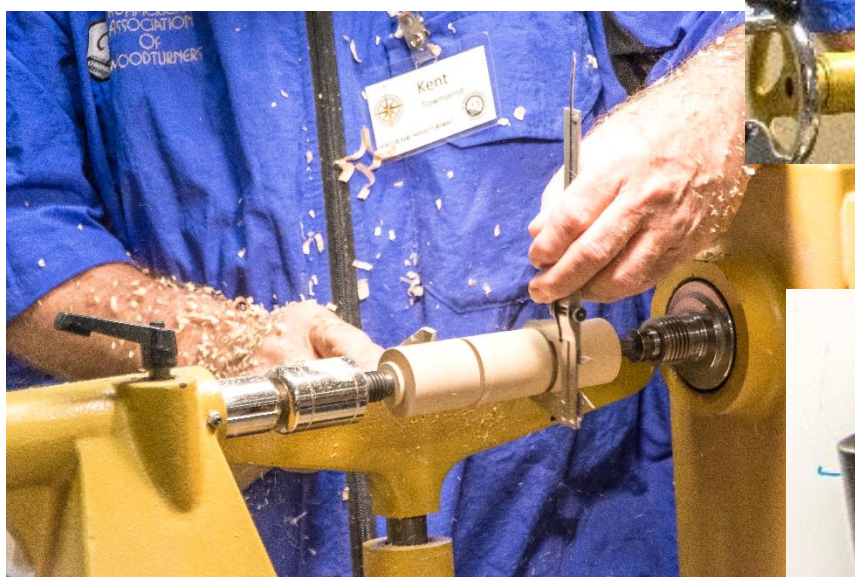
The meeting was opened by Treasurer Chip Siskey. Everyone was reminded that volunteers were needed for the 2017 AAW Symposium to be held in Kansas City.

Demonstration

This month's presentation was about production spindle turning presented by Kent Townsend. His demonstration focused on a 1 3/4 inch diameter x 6-inch-long Upper commonly used above a porch. He advised turning at a high speed based on experience he gained after attending a demonstration by Jimmy Clewes. The high speed and sharp tools help reduce catches. The high speed also reduces turning time.

He demonstrated the use of calipers to set final diameter. Kent suggested that calipers be set 1/64 to 1/32 loose to allow for material removed by sanding. He completed the project by turning beads on both sides of the center section.







Show and Tell

Vaughn Bradley brought a Small Platter and Hollow Form both turned from Poplar





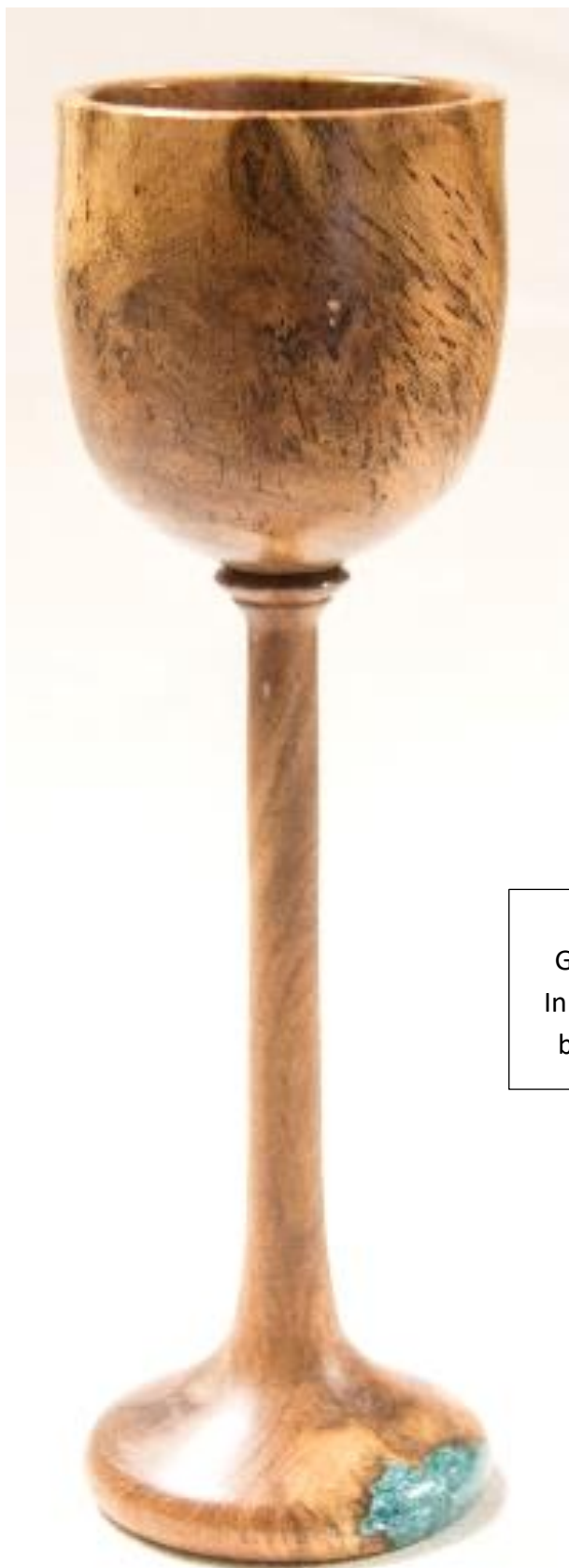
Kent Townsend turned a Bowl from Maple
and carved a Spoon from Mesquite.





Mikeal Jones
turned an Oak
Mushroom
and a Box
Elder Box.





Mesquite
Goblet with
InLace accent
by Jim Tate



Damage Control Plugs

Thanks to everyone who's helped with our plug orders. Our inventory is getting low so we will be asking for help getting restocked. There will be boxes of blanks at the next meeting. Please consider taking a box home and turning them by the following meeting.

Here's a table with the plug dimensions for reference. It's also on the Club News tab of the club website at

<http://www.northlandwoodturners-kc.com/Plus%20Size%20and%20Cut%20List.mht>


Plug	Lg Dia	Length	Sm Dia
#1	1 1/2	7	5/8
#2	2 1/4	4	1 1/4
#3	3 1/4	3 1/2	2 1/8
#4	4 1/4	5 3/4	2 3/4
#5	6 1/2	6	4 3/4

Chapter Sponsors and Supporters



WOODCRAFT
Helping You Make Wood Work

8645 Bluejacket Rd
Lenexa, KS 66214
(913) 599-2800
M-F 9-9 · Sat 9-6 · Sun 9-5
Are you signed up for our email specials??



Woodchips
by Chip

Custom Woodturning and
Woodturning Instruction

Robert "Chip" Siskey
Woodchipsbychip@yahoo.com
(816) 858-3080



METRO
HARDWOODS, INC.

Jeff Edemann, Store Manager
4243 S Noland Rd Independence, MO 64055
816-373-1710

CRAFT SUPPLIES USA
— THE WOODTURNERS CATALOG —

1287 E. 1120 S.
Provo, UT 84606
800-551-8876
M-F, 7am-6pm, MST
Check out the Club Specials every month.
Enter "NorthlandWoodturners" when asked for club name.



Schutte
LUMBER CO.
A Landmark Company
Since 1880

816-892-3398
800-456-2148
Fax 816-753-0250

3001 Southwest Boulevard
Kansas City, MO 64108-3616
www.SchutteLumber.com

Sales@SchutteLumber.Com

816-892-3398 Phone 816-753-0250 Fax