

# Turn North

The Monthly Newsletter of the Northland Woodturners



[www.northlandwoodturners-kc.com](http://www.northlandwoodturners-kc.com)

April 2014

## 2013 Officers

Dave Halter, President

(816) 233-9606

[Herknave@ponyexpress.net](mailto:Herknave@ponyexpress.net)

David Bartlett, Vice President

(816) 331-5664

[dabartle23@yahoo.com](mailto:dabartle23@yahoo.com)

Andy Brundage, Secretary & Newsletter

Editor (816) 279-3610

[andybrun@hotmail.com](mailto:andybrun@hotmail.com)

Chip Siskey, Treasurer

(816) 858-3080

[woodchipsbychip@yahoo.com](mailto:woodchipsbychip@yahoo.com)

## March Program

Stuart Shanker covered many methods of decorating wood projects during his presentation. He gave an overview of pyrography, painting, carving, and texturing. He also covered many of the tools that he has found useful and how to make them or economical sources to procure them.



## Chapter meetings:

First Thursday of each month, 7-9 pm.

Our new address is:

**6737 NW Tower Drive  
Platte Woods Mo. 64151**

We're south of Zona Rosa just off NW Prairie View Rd., just east of Platte Woods Police department and City Hall on the north side of the mall.

## Coming Attractions

April 3 ..... Finals

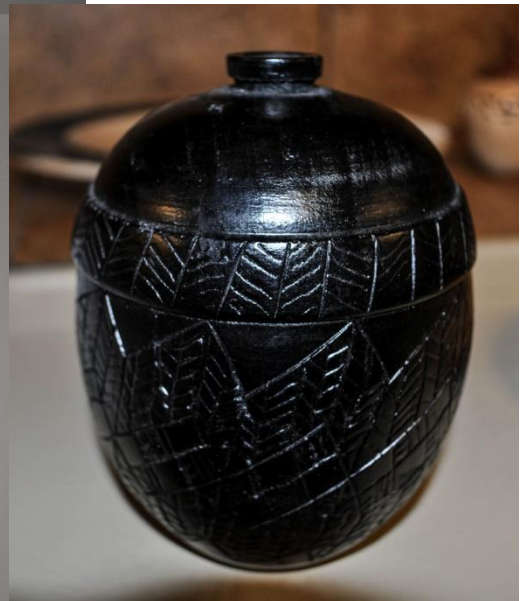
May 1 ..... Acorn Boxes

Newsletters on the chapter website:  
<http://northlandwoodturners-kc.com>





A selection of items that  
Stuart brought to  
illustrate his techniques:





**SHOW AND TELL**



Chip Siskey brought in a Maple Vase with a carved Fisherman and a Black Ash Burl Hollow Form



Spalted Maple Candleholder by Bruce Stevenson







**2014  
WOODWORKER'S  
TOOL SHOW**



### Damage Control Plugs

Thanks to everyone who's helped with our plug orders. Our inventory is getting low so we will be asking for help getting restocked. There will be boxes of blanks at the next meeting. Please consider taking a box home and turning them by the following meeting.

Here's a table with the plug dimensions for reference. It's also on the Club News tab of the club website at <http://www.northlandwoodturners-kc.com/Plus%20Size%20and%20Cut%20List.mht>

Basically, the plugs are all truncated cones with the large diameter on one end connected to the small diameter on the other end with a straight taper.


Plug	Lg Dia	Length	Sm Dia
#1	1 1/2	7	5/8
#2	2 1/4	4	1 1/4
#3	3 1/4	3 1/2	2 1/8
#4	4 1/4	5 3/4	2 3/4
#5	6 1/2	6	4 3/4

### *Chapter Sponsors and Supporters*



**WOODCRAFT**  
Helping You Make Wood Work

8645 Bluejacket Rd  
Lenexa, KS 66214  
(913) 599-2800  
M-F 9-9 · Sat 9-6 · Sun 9-5  
Are you signed up for our email specials??



**Woodchips**  
by Chip

Custom Woodturning and  
Woodturning Instruction

Robert "Chip" Siskey  
Woodchipsbychip@yahoo.com  
(816) 858-3080



**METRO**  
HARDWOODS, INC.

Jeff Edemann, Store Manager  
4243 S Noland Rd Independence, MO 64055  
816-373-1710

**CRAFT SUPPLIES USA**  
— THE WOODTURNERS CATALOG —

1287 E. 1120 S.  
Provo, UT 84606  
800-551-8876  
M-F, 7am-6pm, MST  
Check out the Club Specials every month.  
Enter "NorthlandWoodturners" when asked for club name.



**Schutte**  
LUMBER CO.

A Landmark Company  
Since 1880

3001 Southwest Boulevard  
Kansas City, MO 64108-3616  
www.SchutteLumber.com

816-892-3398  
800-456-2148  
Fax 816-753-0250

**Jeff Edemann**  
Showroom Manager

Direct Line 816-892-3334  
Direct Fax 816-892-3335  
j\_edemann@schuttelumber.com